

General Meetings are held on the **second Thursday** of the month at 2.00pm
at Christ Church, 164 New London Road, Chelmsford CM2 0AW

General Meeting Speakers

Thursday 8th February at 2pm AGM and 'Meet the Group Leaders'
See page 2 for further details and pages 16 & 17 for the Treasurers Report and a copy of the accounts.

Thursday 14th March at 2pm Stephanie Disch – Dog Trust

Thursday 11th April at 2pm Easter Social

Anyone for Pickleball?

Pickleball is similar to tennis, the ball is much slower and less bouncy than a tennis ball. the net is slightly lower than in tennis and the court is smaller – so it's suitable for us thirdagers! I've never played but as a semi-retired rackets player how difficult can it be? I've read it up online. At the Riverside Leisure Centre they use the badminton courts and just replace the nets with lower ones, they hire out the bats and balls. It can be played as singles or doubles but for us, the latter might be the way to go.



If there is enough interest I will investigate how to organise a group of us to play, early days yet but anyone interested should contact me soon via the Walking Group page on our U3A website.

Alan Mayo

Anyone for a Game of Croquet?

Chelmsford Croquet Club has invited us to join them for a social day of Croquet on Monday 20th May 2024. Club members will be on-hand to explain the game and there will be mallets available for 16 people. The club plays on two lawns on the far side of Writtle University sports ground in Fox Burrows Lane, which is right opposite the college.

There will be a charge of £8 per person which will include tea and coffee. Participants should bring their own lunch. Let Lesley Wood know if you are interested – email lesleywood54@yahoo.com



*learn
something new
today!*

Meet the Groups

ART CLUB
ART APPRECIATION
ALL DAY WALKS
BIRDING
BOOK CLUB
BEGINNERS BRIDGE
BUS PASS GROUP
CHURCH VISITS
COACH OUTINGS
CRAFT WORKSHOP
DISCUSSION GROUP
FAMILY HISTORY
FISHING
FRENCH CONVERSATION
GARDEN GROUP
INFORMATION TECHNOLOGY
DINING GROUP
JAZZ & BLUES GROUP
LOCAL HISTORY
LUNCH CLUB
PHILOSOPHY
POETRY
SCIENCE GROUP
SHORT WALKS
SPANISH CONVERSATION
SUNDAY LUNCH GROUP
TRAVEL GROUP

AND MORE.....

Chelmsford u3a has over 30 Interest Groups offering a wide range of opportunities to come together to learn for fun. explore new ideas, and learn new skills.

Why not come along to our

Annual General Meeting

on

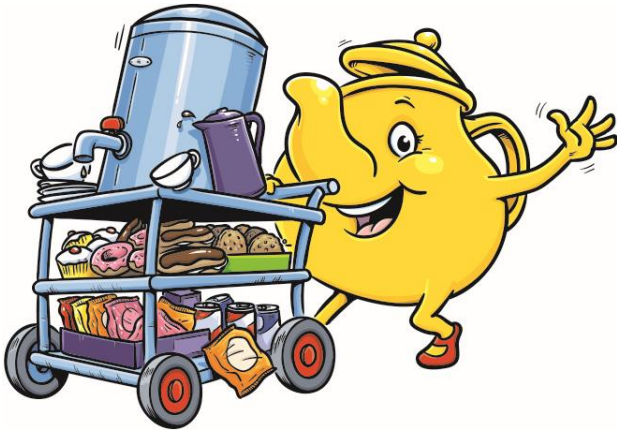
Thursday 8th February 2pm at
Christ Church London Road

where after the formalities you can meet the group leaders and find out more about their activities.

If you have a particular interest or passion that you would like to share with other members, why not consider starting a group. A member of the committee will be on hand to explain how to go about it and what support is available.

See page 18 for details of the Essex Wildlife Trust Quiz. We will be having one or more u3a tables depending on the amount of interest.

MONTHLY MEETING – URGENT ASSISTANCE REQUIRED



After several years of sterling service, Marie Neale is relinquishing the role of organising the refreshments available during the monthly meetings and a replacement(s) is needed. If you can make a cup of tea or coffee and are willing to ensure the tea, coffee, sugar, milk and biscuits are topped up (payment reimbursed) **this could be the role for you.**

In addition, **volunteers are required** to set out the tables and chairs prior to the meeting or help in the kitchen with serving/washing up. Please attend at 1.15 p.m. so the meeting can commence on time.

VACANCY: EVENT ORGANISER

We need a volunteer to arrange and organise our Monthly Meetings, Social Meetings and special one-off events. The duties of an Event Organiser can vary depending on the type of event being organised. However, some common responsibilities include:

- Planning and organising events
- Selecting venues and booking rooms
- Ordering catering
- Organising raffles (including purchasing prizes)
- Sourcing a suitable Quiz and printing question sheets etc
- Obtaining necessary licenses and permissions (e.g. alcohol licence)
- Completing Risk Assessments (depends on activities involved)
- Managing volunteers – arranging rotas etc
- Publicising the event – newsletter, noticeboards, website, newspapers



Apply to: Lesley Wood by email chair.chelmsfordu3a@yahoo.com

What should you consider when moving house?

In the next Future Lives event, on Tuesday 6 February at 2pm, features Kathleen Dunmore, Housing Advisor to the Retirement Housing Group. She'll be talking about what factors you should take into account when considering a move into retirement housing and the types of retirement housing available.

u3a Future Lives is a u3a group dedicated to sharing information about how to make the most of our later lives. Book your place <https://www.u3a.org.uk/our-impact/future-lives>.

London - The City & its People Group

Leader: Berry Cornell

If you would like to join the London Group please contact the membership secretary Chris Rycroft for further information: Tel no. 01245 473047 email: c.rycroft123@btinternet.com.

The Group **usually** meets up on 4th Monday of the month at 2pm but **dates in bold** are exceptions due to Bank holidays, Christmas and availability. Meetings are held at Christ Church, New London Road, Chelmsford.



Programme from February 2024 – July 2024

- 26th Feb London's Spectacular Riverside History. Peter Lawrence will be Zooming his talk. The Zoom link will be sent via email nearer the time.
- 25th Mar Alfred Hitchcock's Leytonstone, speaker Gary Lewis.
- 22nd Apr A visit to the Horniman Museum – details to follow.
- 20th May** Walking in Southwark and Bankside, speaker Kathy Lancaster.
- 24th Jun Speaker David Williams – topic to be decided.
- 22nd Jul A walk around the Inns of Court lead by Richard Pusey and Terry Pipe.

Committee: Berry Cornell Convenor 01277 355823, Susie Fowkes, Chris Rycroft, David Marsh, Dave Sayers, Bob Smith Deputy Convenor.

Birding Group

Leader Alan Alexander 01245 248030 Mobile 07712 818499

I was not able to be at the January Birding Group Meeting so I am indebted to Peter Tebbit for the following.

The Birding Group's visit for January was to Hanningfield Reservoir. The day was bright and sunny but very cold, particularly in the wind. We were a nine strong party, including our new member, Mary Hall, who was made very welcome.

We viewed from the four hides nearest the Visitor Centre plus the woodland and enjoyed some good birdwatching. We saw a variety of birds, including Greylag and Canada Geese, Heron, Black Headed Gull, Common Gull, Herring Gull, Lesser Black Backed Gull, Greater Black Backed Gull, Wigeon, Teal, Golden Eye, Gadwall, Shelduck, Little Grebe, Great Crested Grebe, Goosander, Cormorant, Lapwing, Dunlin, Coot, Mute Swan, Wood Pigeon, Magpie, Greater Spotted Woodpecker, Long Tailed Tit, Great Tit, Blue Tit, Robin, Pied Wagtail, Carrion Crow, Jackdaw. In the final hide a few of us were able to see a distant Peregrine on the far bank.



Peregrine Falcon

Our next meeting is on 23 February, at Old Hall Marshes. I will email all members nearer the date to confirm where we will meet.

22nd March. Abberton
26th April. Tiptree Heath
24th May. Fingeringhoe
21st June. Lea Valley
July. No meeting
23rd August. Cockayne Wood
27th September. Rainham Marshes
25th October. Thameside
22nd November. Blue House Farm

New members are very welcome to join us, please feel free to contact me on the numbers above, or by the U3A website email address. We meet at 10am on the fourth Friday of the month at the chosen venue and set off about ten minutes later. The walking is not arduous, we usually spend more time standing or sitting in hides enjoying the spectacle of nature. There is no fee to join the group and **all abilities are more than welcome** whether an experienced birder or total novice.

If members would like to be added to our growing WhatsApp Group, please let me know and give me your mobile number. As always, if any members have ideas or suggestions for visits, please let me know. I will send all members an email nearer the time, confirming the location and that we can go ahead.

Lunch Club 3

Leaders: Laraine Linard and Barbara Childs



What a lovely way to start 2024! This was our first venture into arranging a luncheon since taking over from Harry (and three cheers for Harry for setting up LC3). It was a really lively bunch of 14 diners (including 4 new members to LC3 so a big welcome to them) who enjoyed the delights of the Horse & Groom in Roxwell and we thoroughly enjoyed ourselves as the attached photograph will illustrate! Thank you to all for making it such a pleasurable experience.

Our next luncheon will be on 1st February at the Rose & Crown, Great Waltham

Barbara and Laraine

Spanish Conversation Group

Leader: Lindsay Whitehouse

Six members and two first-timers attended our meeting in Chelmsford Library on 17th January 2024. Our numbers were a bit depleted, as four members were on holiday abroad and three others had alternative commitments. Nevertheless, it turned out to be a very good meeting.



Christmas turned out to be a very mixed bag for our members. Two had their Christmas ruined by outbreaks of Covid and novo virus. On a happier note, another went to Palma de Mallorca for Christmas and had a lovely time with blues skies and temperatures around 16 degrees!

We spilt into pairs and held one to one chats about a miscellany of random topics suggested by one of our members. We were also asked to tell the other person about we had done yesterday, which turned out to be more interesting than it sounds!

We finished with three of our members talking about newspaper / magazine articles or website postings that had interested them. The items that we covered were the difference between various types of whisky; the efforts of the manufacturers of robotic lawnmowers to avoid harming hedgehogs; and the discovery of a previously undiscovered type of echidna in the forests of New Guinea!

If you already can hold a basic conversation in Spanish, and wish to join us, please click on the link on our website. The next meeting for the group will be on Wednesday 21st February 2024 at 10:30am at Chelmsford Library in a meeting room on the first floor.

David Gout

IT Group

Leader: Lyn Parsons



The IT Group met in January and despite the freezing weather there was a good turnout. Once again the support members had a variety of different IT questions put to them such as downloading apps, how to use WhatsApp, sending and receiving texts, online banking, using store cards on mobile phones, protecting credit and debit cards.

At our February meeting we will have a table dedicated to those who want help with using Facebook, for people who already have an account or those wanting to set up an account. Lesley will be there for the digitising photos project plus the usual help with Apple and Android devices.

So if you need any help with IT or want to learn more about specifics like Facebook; digitising photos, online banking or any other area of IT do join us.

We meet on the 2nd Wednesday of the month 10.00 at Christ Church New London Road.

You can email me via the Chelmsford u3a website to express your interest or with any IT topics you would like to see covered.

Our next meeting will be on Wednesday 14th February.

Science Group

Leader: Chris Bellamy



Science Group lunch

Thursday 16th February - Lord Rayleigh and the Discovery of Argon By David Hall

David will start by introducing Lord Rayleigh, an important 19th century scientist. He will explain how Rayleigh came to be doing the experiments that eventually led to the discovery of argon, and why this was important. David will perform some short physics demonstrations to explain the principles behind Rayleigh's own work, and then continue to discuss the results that Rayleigh obtained, and how these led, with much further painstaking work, to the discovery of argon. It is important to understand that Rayleigh was not looking for argon in the first place – he couldn't, since there was no pre-existing clue to its existence.

David Hall studied Engineering at university and then worked for about 25 years in industry, as a R&D engineer in the fields of microwave communications and optical fibre technology. Like many others, he moved to Chelmsford to work for the Marconi company, later moving on to work for other major companies. But in mid-career he decided to retrain as a physics teacher and taught at King Edward VI Grammar School – KEGS for 15 years, mostly in the role of head of physics.

Science Group talks are held in the Catholic Church Hall in Melbourne Avenue, Chelmsford CM1 2DU. Doors open at 1.30pm and the talks start at 2.15pm. Tea/Coffee before the talk. **Non-members of the Science group are welcome. £2 for non-members.**

Chelmsford Science and Engineering Society

- | | |
|----------------------|---|
| 7 th Feb | Sizewell C: Power For Britain by Derek Harper Chief Engineer, Atkins. Sizewell C is a new nuclear power station on the East Suffolk coast and will generate 3.2-gigawatts of low-carbon electricity for around 6 million homes. |
| 13 th Feb | Space Imaging by Gabriela Druitt, Director of Engineering at Teledyne E2V. Chelmsford has, for many decades, been home to World leading producers of technology in many different fields but how many of us realize just how cutting edge that technology is? |
| 21 st Feb | We got the Power: UK Electricity Distribution by Graham Livings, Project Manager at National Grid. |

For more details see the CES website at <https://ces.org.uk/>

Lunch Group 2

Leader Harry Franklin

Heavy rain and low temperatures didn't prevent twenty-three members meeting for lunch on Tuesday, 23rd January at Miller & Carter, hosted by Margaret and Paul. It's been quite some time since we last ate there and judging by the excellent food (although one member found his chicken a little too dry) and the standard of service, we'll be lunching there again before too long.

If there's a quibble, it's a minor one and deals with the confusion experienced when it came to paying our bills. It seems that when a largish party is gathered, the bill covers all diners and then it's necessary to break this down into individual costs. Time consuming and a bit of a nuisance. Other than that, and it is minor, a thoroughly enjoyable gathering.

We meet again at The Horse & Groom on Tuesday, 27th February when Jan and Roger will host.

Harry Franklin

Local History Group

Leader: Jane Humphreys 01245 259590

To start the year, our speaker on 2 January, Adrian Tindall, took us over the border into Suffolk to share with us the delights of Bury St Edmunds. The centre of Edmondsbury, as it was known from medieval times, was planned by the Norman abbots on the land adjacent to the Benedictine abbey. The abbey church was famous as the resting place of King Edmund who was defeated by invading Danes in 869AD, refused to renounce his Christian faith, was tied to a tree and filled with arrows, and beheaded. King Cnut founded the abbey in 1020 to house the shrine which became a place of pilgrimage (otherwise known as a tourist attraction and excellent source of income). Only two gatehouses survive, with the rest of the abbey falling foul of Henry VIII's redesigning of church administration.

A common source of confusion is that Bury now has a cathedral built on the western edge of the abbey land. From the 1200s this was simply the parish church of St James, but in 1914 (like Chelmsford St Mary's) it became the cathedral for the new diocese and a major building programme took place to extend eastwards, with the central tower only completed in 2005. A little to the south on the same street is the parish church of St Mary, a fine Suffolk wool church with a notable 14th century hammer beam roof. St Mary's has the tomb of Mary Tudor, younger sister of Henry VIII, sometime Queen of France and grandmother of Lady Jane Grey.

The rectilinear Norman street plan survives, though many of the buildings visibly date to Georgian times. They include the Theatre Royal (National Trust), the Athenaeum, James Oakes' house in Guildhall Street designed by Sir John Soane, and the Greggs bakery in Abbeygate Street. Charles Dickens stayed at the Angel Hotel for some time and described Bury in *The Pickwick Papers* as 'A Handsome Little Town'.

Bury St Edmunds is not frozen in time. A notable 21st century development is The Apex performance space which has quickly become known internationally for its acoustic excellence for music and theatre.

On 6 February we will hear from David Williams on 'The Estuary of Mysteries' and on 5 March Georgina Green will introduce us to the Buxton family. Do join us at 2.15pm at Boreham Village Hall – visitors welcome for £5.

Jane Humphreys

The Essex Branch of the Historical Association

2.30pm Saturday 3rd February 2024

**Colchester's Victorian doctors: How was the local hospital regarded?
To what extent did it influence medical practice?**

Dr Jane Pearson, Essex University

2.30pm Saturday 2nd March 2024

Aztecs and Mayas and the Story of the Spanish Conquest of Mexico
Ian Mursell. Miranda Net Fellow, Institute of Educ. London University

at Trinity Methodist Church, Chelmsford
All Welcome £5 for non-members

Art Appreciation Group

Leader: Brenda Kelly

This month we all met at a member's house to discuss American Art and to name our favourites. These were quite varied. Edward Hopper (1882-1967) was favoured by two of our members, John Singer Sargent (1856-1925), Georgia O'Keeffe (1887-1986), Mary Cassatt (1844-1967) by others, while George Bellows (who majored on boxing scenes) and Philip Guston, who has a current exhibition at Tate Modern and painted war scenes including Vietnam and 1960s America, were also discussed.



Edward Hopper's most famous painting was 'The Night Hawks' depicting a couple of people at a deserted cafe at night. He did not paint well-known people but mundane things and emphasised boredom, isolation, loneliness, emptiness. His pictures are very atmospheric.

John Singer Sargent, an American born in Florence, travelled a lot, was friends with everyone and painted many well known people. However his scope was wider.

'The Fisher Girls' on a French beach is well-known and 'Gassed' at the Imperial War Museum is a heart-rending picture of a long line of wounded soldiers holding on to each other on the way home.

Georgia O'Keeffe is known for her paintings of flowers, skulls, rocks and bones she found in the desert, as well as desert-inspired landscapes. She studied art in Chicago and met the art dealer Alfred Stieglitz who encouraged her to move to New York. They later married. Later in life she moved permanently to New Mexico which inspired her work.



Mary Cassatt was born of a well-to-do family and her mother encouraged her love of art. She moved to Paris where she met Edgar Degas who introduced her to some of the Impressionists and encouraged her art. She showed in the first Impressionist exhibition in 1877 which did not sell well, although sales improved in their next exhibition in 1879. She painted mainly women - alone, sometimes in theatre boxes, or with children. As a woman, she could not go to cafe concerts, back-stage, or brothels where the male Impressionists often

found their subjects. Her family came over to live in Paris but she always wanted to be known as an American artist and not a French one and always kept a home in America. With Berthe Morisot they were the two leading women artists of the Impressionists.

Next month on Tuesday 27th February we are having a Zoom talk by Lydia Goodson (she lives in Kent). She is speaking about 'The Golden Age of Dutch Art'. We have had her before and she is very good.

Topic: Chelmsford U3A Art Appreciation Group

Join Zoom Meeting

<https://us02web.zoom.us/j/81916510980>

Meeting ID: 819 1651 0980

In March we are travelling to Tate Britain to see, in fact, an American artist 'Sargent and Fashion'.

Beginners Bridge Group

Leader: Eddie Wood

From Tuesday 6th of February 2024 we will be meeting at a new venue,
The Globe Public House 65 Rainsford Road
Chelmsford CM1 2QJ

Travel group

Leader Anne Brereton

I hope this cold weather is enticing you to book your next holiday. Unfortunately the two holidays we have running this year are not in sunny climes. The first holiday we have is to Northumbria. leaving on the 8th May 2024 for 5 days. We are inviting other u3a members to join us as we have spaces available I am including the itinerary and booking form which needs to be returned to Jackie Large. Details are on the form.

The other holiday is to the Ring of Kerry. Ireland 6th - 12th October 2024. This is with Lodge coaches. They have six twin rooms available. Please contact Lodge coaches on 01245 231262 and tell them its Ring of Kerry with u3a Travel group. Please let me know if you intend to book as all we ask is that if you do join us then we ask a £5 joining fee. We look forward to seeing as many of our members as possible on a holiday with people you know.

Full details of both holidays are on pages 19 and 20 of this newsletter.

Garden Group

Group Leader: Chris Bellamy

Secretary: Val Green

I am very sorry to say that Val Green has had a fall and damaged her hip when setting out to come to the Garden Group lunch at Little Channels. Val was admitted Broomfield hospital where she was operated on Friday. All the 34 members at the Garden Group lunch, who enjoyed a good meal, wished Val a speedy recovery.

The next meeting of the Garden Group at 2pm on Thursday 22nd February is a Guided Tour of the Snowdrops in the Gardens of Little Easton, CM6 2BB, £10 Coffee/ tea/ cake. Twenty-two members have indicated to come. Please email Chris Bellamy if you plan to come by 5th. Feb.

Philosophy & Religion

Leader: Jim Mackay



Throughout 2023 we debated the ideas of various philosophers, from ancient Greece up to modern times, and we argued the merits of several 'isms' such as Buddhism, Communism and Humanism. Our discussions were invariably lively and, needless to say, our views often collided - but we remained in good spirits and as friends after each meeting.

After our year of mental toil, we retired to the Fox & Raven Inn for a belated and well-earned festive lunch. The pleasant atmosphere and the good food provided a great opportunity to continue to share our views on the rich tapestry that is our history and our lives!

We have agreed a few interesting topics that will no doubt challenge us in 2024...

Book Group

Leader: Andy Moir

At our January meeting we discussed *The Beekeeper of Aleppo* by Christy Lefteri. The novel's narrator is Niri Ibrahim. Niri and his wife Afra have fled from Syria due to the violence of the Syrian Civil War. After a long journey, they have managed to reach London, England. They are living in a lodging house with other refugees, as they wait to learn whether or not they will be granted asylum.

They lived a peaceful life in the Syrian city of Aleppo where Nuri was a beekeeper and Afra an artist. They had a seven-year-old son named Sami. Nuri worked as a beekeeper with his cousin Mustafa. After violence of the war began to spread and to affect Aleppo, Mustafa sent his wife and daughter out of the country. Later, when Mustafa's son was killed, Mustafa decided to flee the country as well.

One day, Nuri's son Sami was killed by a bomb. Afra witnessed Sami's death, and the trauma caused her to go blind. After Nuri narrowly escaped being forced to join a militia, he persuaded Afra to leave the country with him. The novel's main storyline focuses on Nuri and Afra's journey, which is told in a series of flashbacks.

The group agreed that it was very well written and dealt with a number of important issues. People enjoyed the book but also felt that it was very sad in places.

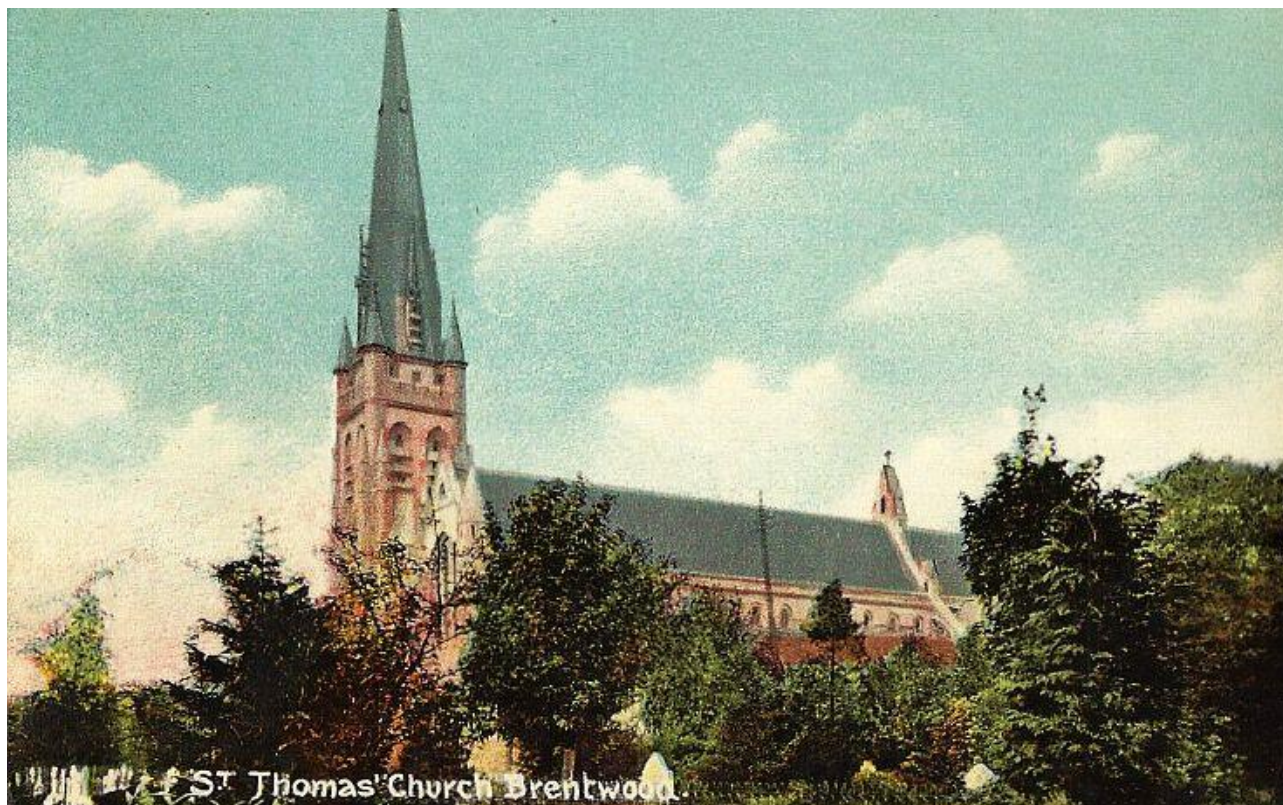
Our books for the next three meetings are:

Mon Feb 19 th	<i>The Midnight Library</i> by Matt Haig
Mon Mar 18 th	<i>Travels with my aunt</i> by Graham Greene
Mon Apr 15 th	<i>Old Baggage</i> by Lissa Evans

Church Visiting Group

Group Leader: Brian Greatrex

Administrator: Michael Gray



The Church Visiting Group intends to run a full season again this year. As usual, the visits will take place on the first Wednesday of each month, starting with close by Brentwood on March 6th. We hope to include a London visit again, but there will be no coach outing this year. The last visit of 2024 will take place on November 6th.

We look forward to welcoming members old and new. Further details will be announced when the visits have been confirmed. If you're not already on our mailing list, and would be interested in joining us, then please do get in touch. Details are on the Chelmsford u3a website.



Tenpin Bowling Group

Leader: Roger and Ruth Spall.

WE'RE HOME AGAIN AT CITY BOWL – AND, WE HOPE, AS TAKE THAT SAID, “BACK FOR GOOD”

Yes Folks, and hot off the press, from today (26th January) after a temporary sojourn at Madison Heights in Maldon for our Tenpin Bowling group, we're back in Chelmsford. Our time in Maldon was pending the reopening of City Bowl following construction work at the Chelmsford site. However due to various delays, progress was slow and what was a temporary move has lasted some 18 months.

But today twenty eight of us enjoyed a return to a refurbished City Bowl. In fact, despite scores still being inconsistent, no-one seemed too concerned as they were all pleased to be back in the familiar surroundings of our Home Ground. There were also some new balls and new shoes, and now there is even a decent car park. The staff are just as friendly so we're looking forward to many an enjoyable bowling morning at City Bowl. The pictures below give a flavour or what it's all like, but don't be put off by the

serious look on people's faces – there's new screens and other equipment so we're keen to see how we're all doing!

We continue to play on the 2nd and 4th Fridays of every month, meeting at 10.00am for a 10.30am start. The cost is £8 for two games, including shoes and tea/coffee and a biscuit at half time. For anyone interested in joining the group, feel free to email me or give me a call on 07702452535.

And a finally, just a thought,

When chickens communicate, do they use fowl language?



Bus Pass Group

Group Leader: Maurice Austin

Well, I had my break in January and, despite my best intentions, achieved very little for the Bus Pass Group. Little things like a nasty cold, a family funeral, a couple of conferences (where I probably picked that cold up!) and a u3a meeting in London were amongst my excuses for my lack of productivity. Oh, and Christmas with my lovely sons and a few other activities “on the side”!

I did have a few test bus rides to recce some future trips: more of these later in the year. One of the reasons I like to ride buses is the people watching and listening opportunities! Some of the conversations one part hears spark the imagination! Did that person really say ... no, I can't repeat that, it was so outrageous, it either implied something awful was about to happen when that person got home, or I have a most overactive mind!

Our next trip will be Friday 9 February 2024. We will catch the Arriva 59 at the Bus Station, stand 9 (outside that grocer whose name begins with T) due at 10.10 and travel to Harlow, due to arrive at the Bus Station at 10.58. This bus starts at Anglia Ruskin University at 10.03.

I had hoped to arrange a guided tour of the Gibberd Gallery and the magnificent collection of sculpture in the central gardens but have not been able to arrange this yet due to sickness (not mine). We can still visit the gallery etc if I cannot contact the guide.

Now, I know some people are a bit “sniffy” about Harlow, but I like it. Like everywhere, it has its less than favourable features but the architect who oversaw the initial development of the new town (the aforesaid Frederick Gibberd) and who laid down its master development plan was a man of great foresight and many of his planning and architectural innovations are as valid today as they were in the late 1940s and '50s when the new town was created. I am hoping to introduce you to someone who worked with the great man.

If the weather is suitable, we will have a very gentle stroll around the town centre (for those with dodgy feet, there are plenty of places just to sit and admire). If it is not, I will plan a bus ride through some interesting countryside.

Of course, if you have other needs, you are more than welcome to do your own thing!

Buses back run hourly, I plan to catch the one at 15.05 which is due at Chelmsford Bus Station at 16.00 and ARU at 16.06.

As you know, it is not possible to plan too far ahead in detail as bus timetables are likely to be changed at short notice. But my provisional plans are to go out on the second Friday of every month as usual.

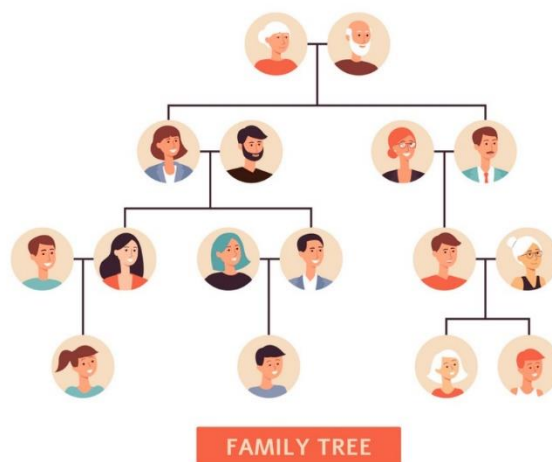
On Friday 8 March, we will go to Saffron Waldon. Other trips pencilled in are repeats to Southend-on-Sea, Tollesbury and Ongar, using slightly different routes where possible and Heybridge, Braintree, Brightlingsea and Coggeshall. I have over 60 possible trips planned!



As we had no trip in January, I can't show you a picture of it! But this bus is on a route we did use in 2023. Can you work out where it is?

Family History Group
Leader: Lesley Wood

Chelmsford's Family History Group has joined up with Baddow & Galleywood whose Family History group closed at the end of last year. We met on Friday 16th January at Christ Church in Room 2 which has comfortable chairs, a built in screen and projector and most importantly WIFI. There were 19 of us in total, with roughly a 50/50 split between the two u3a's.



I presented a case study to the group entitled 'Barking up the wrong Tree' which concerned the efforts of a person named Angie to trace her Great Grandmother's family line back to it's origins in Wales. Having found her Gt Grandmother, Lilian Peregrine Williams aged 6 on the 1891 Census with her aunt and uncle, Angie assumed that Lilian's parents (her 2 x Gt Grandparents) were the family living next door. However, the William Williams in question was a Police Inspector and his wife was named Mary. Angie had ignored or dismissed the evidence she had from Lilian's birth certificate, which was that Lilian's father's occupation was a 'Silverman' and that her mother's name was Anne. Tracing the family backwards in time was not easy, as it transpires Lilian's mother Anne Peregrine, died when she was very young and her father had remarried. In fact his 2nd wife died after only a few years and he married for a third time!

It is easy to go wrong in Family History, especially if you fail to obtain documentary proof and/or have a tendency to jump to conclusions! Lesley demonstrated that relying on secondary evidence alone, like Birth/Marriage/Death registration indexes is not sufficient proof to base your research findings on.

We will meet next month, same time, same place. If you are interested in joining us please get in touch.

Lesley Wood
lesleywood54@yahoo.com

Christmas 2024



As a committee we were quite taken aback by the level of interest in the 'Christmas social'. Far more members expressed an interest in coming than have attended any of our post-Covid monthly meetings. We went right up to the Fire Safety Certificate limit but unfortunately still didn't have enough places to offer everyone and some members were left disappointed. The larger than usual attendance had a knock-on effect in the car park.



The solution we have decided on is to hold two meetings in December 2024. In addition to our usual date of Thursday 12/12/2024 Christ Church has been booked for the afternoon of Friday 06/12/2024. The two events will be ticketed. Further details will be announced later this year.

Reminder to Group Leaders

Please send copy for the March 2024 Newsletter to the editor, Andy Moir.

All copy must arrive no later than Thursday 29th February 2024.

Please would contributors use the Calibri Font size 12.

For MS Word use Paragraph settings; line spacing single and spacing 0 before and after lines.

Committee To contact a member of the committee, go to the Contact page on our website.

Chair	Lesley Wood	Vice Chair	David Sweeney
Secretary	Marie Neale	Treasurer	Eddie Wood/Wendy Hubbard
Membership Secretary	Diane Read/Wendy Hubbard 01277 352413		
Newsletter Co-ordinator	Lyn Regan/Brian Littlechild	Speaker Organiser	Eddie Wood
Events Organiser	Geoff Swaine	Committee Member	Nick Bailey
Committee Member	Ann Bell	Committee Member	David Marsh

Volunteers not on the Committee

Newsletter Editor	Andy Moir	Website Manager	Andy Moir
-------------------	-----------	-----------------	-----------

Treasurer's Report to the Members for the Year to 31st December 2023

2023 has seen a significant increase in our income from membership subscriptions as we continue to recover from the pandemic. Gift Aid shows as 'nil' because I didn't make the claim in time for it to be paid in 2023. (Had HMRC processed the claim as quickly as they did in 2022 it would have been in time.) 2021 had also been late and there were two years of Gift Aid paid in 2022. The donations came from a deceased member in lieu of funeral flowers and through members taking holidays with Riviera Travel. Sundries are so high because after many years of organising trips Pauline Spratt closed the Outings Group and the outstanding balance was transferred to the main account.

Expenditure has also increased. The Capitation fee that we pay to the Third Age Trust (TAT) and the cost of Third Age Matters are higher because our membership numbers are higher. 2023 was our first full year in Beacon, (TAT's administrative tool). The bulk of the costs of our celebration of 30 years of Chelmsford u3a were paid in 2023. We spent more on Christmas in 2023.

Expenditure has exceeded income for the year, by £1,769.59. The unpaid Gift Aid claim is for just over £1,000.

In the coming year we hope to receive the outstanding Gift Aid and will have a new claim to make. The new claim will be higher because of the exercise conducted in 2023.

We have healthy reserves, currently £11,233.48, which the Committee considers should be sufficient to cover any unforeseen eventualities. For the coming year we will be able to both maintain the current rates of subscription and continue to offer support to some of the Specialist Interest Groups.

I would like to thank the Examiner, Maurice Van Maellerts, for checking the accounts in an efficient and timely manner. I would also like to thank the Treasurers of our Special Interest Groups for their cooperation throughout the year.


Eddie Wood
Treasurer

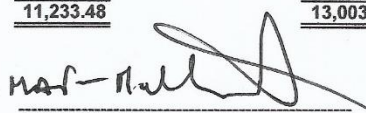
Chelmsford U3A
Income & Expenditure as at 31st December 2023

INCOME	2023	2022
Membership Subs	6,749.00	6,167.00
Visitors	0.00	6.00
Donations	716.11	831.45
Gift Aid	0.00	1,914.27
Bank Interest	274.84	19.99
Copse	0.00	118.00
Unclassified	108.00	215.00
Raffle	0.00	85.10
Diaries	0.00	21.60
Sundries	738.32	11.92
Total	<u>8,586.27</u>	<u>9,390.33</u>
EXPENDITURE		
National Capitation Fee	1,664.00	1,072.00
Hall Hire	1,987.90	1,602.42
Zoom	143.88	191.88
Refreshments	115.36	215.08
Speakers	935.00	826.80
Newsletter Print	216.34	256.75
Stamps	196.10	209.60
Third Age Matters	1,389.70	964.27
Website	38.39	0.00
Beacon	521.00	214.16
Travel	0.00	0.00
Conference	0.00	0.00
Admin	0.00	176.45
Advertising	138.66	144.00
Raffle Prizes	159.96	46.00
Diaries	0.00	41.25
Bank Charges	124.40	173.99
Christmas	867.77	414.49
Easter	310.92	276.40
Summer Social	464.24	740.15
Copse	0.00	650.00
30th Anniversary	868.31	273.00
Group Support	213.93	689.19
Sundries	0.00	31.04
Total	<u>10,355.86</u>	<u>9,208.92</u>
Net Surplus/Deficit for the Year	<u>-1,769.59</u>	<u>181.41</u>
	<u>8,586.27</u>	<u>9,390.33</u>

Balance Sheet as at 31st December 2023

Current Assets	2023	2022
Accumulated Fund as at 1st January	13,003.07	12,821.66
Prior Year Adjustment	0.00	0.00
Net Surplus/Deficit for the Year	<u>-1,769.59</u>	<u>181.41</u>
Accumulated Fund as at 31st December	<u>11,233.48</u>	<u>13,003.07</u>
Represented By		
Current A/c	659.31	1,933.93
Deposit A/c	<u>17,428.97</u>	<u>15,779.13</u>
	18,088.28	17,713.06
Less Held for Groups	6,854.80	4,709.99
	<u>6854.8</u>	<u>4709.99</u>
	<u>11,233.48</u>	<u>13,003.07</u>


Treasurer Eddie Wood
Date January 2024


Examined by Maurice Van Maellerts
Date January 2024

EWT Chelmsford Local Group QUIZ



Essex
Wildlife Trust

Saturday 2 March 2024

**Aquinas Hall, St John Payne Catholic School,
Patching Hall Lane, Chelmsford CM1 4BS**

Commences 7.30pm. sharp

Teams of 8 (max.) You may enter as a team(s) or ask to be included with others.

£11.00 per person which includes a Ploughman's Supper.

Please bring your own drinks and glasses as these will not be supplied.

To reserve your place(s):-

1. Contact Lesley Stapleton on 01245 261929 (9am - 9pm only please) or via peterlesley@aol.com
2. Send your completed booking slip to Lesley:-
13 Orford Crescent, Chelmsford CM1 7NY



We cannot:-

- Confirm your reservation until payment has been received.
- Admit people on the night who have not booked, as our catering and table plans will have been organised.

There will be a raffle with lots of attractive prizes.
Donations are very welcome.



These events are usually very successful and Essex Wildlife Trust benefits greatly from participants' generosity.

Thank you in advance for your support.

Booking Slip

Please reserve place(s) for the EWT Quiz on Saturday 2 March 2024

Please tick one box:-

- I enclose a cheque for £..... payable to EWT Chelmsford Group
 I have transferred £..... to A/c no. 00375411 and Sort code 20-19-95 giving my surname as the reference. *(Our preferred payment method).*



Name:.....Tel:.....

Please supply an Email address for your booking confirmation

Email:.....

Registered Charity No. 210065

We will be having one or more u3a tables depending on the amount of interest.

Chelmsford u3a presents

The Historic Houses & Heritage of Northumbria

5 days from £669 Departing 8th May 2024



For more information on this and our other group tours contact

Jackie Large
Tel: 01245 476978
Email: snowberry505@gmail.com
18 Roughtons, Chelmsford CM2 8TF



FEATURES

- Half board accommodation
- A full programme of included excursions, travel & guided tours
- Entrance fees to non-National Trust properties included
- Blue Badge guide included on Days 3 & 4
- Executive coach throughout

WHAT WE WILL SEE

- Durham
- The Angel of the North
- Beamish Open Air Museum
- Alnwick Gardens
- Cragside House & Gardens
- Lindisfarne Priory
- Seahouses
- Yorkshire Sculpture Park

OPTIONAL

- Boat trip to the Farne Islands on Day 4

ACCOMMODATION

We stay four nights on a half board basis at the 5* Clarendon Hotel (formerly Clarendon Hotel) in Whickham, four miles south west of Newcastle. Located in the centre of this historic village, facilities at the hotel include Ploch's Restaurant that offers a high standard of cuisine and the Egyptian style Sphinx Bar with its superb panoramic views over the Tyne Valley. All rooms are en suite and feature telephone, television, tea & coffee-making facilities and a hairdryer.

EXTRAS TO YOUR TOUR

- Single room supplement: £90
- Insurance (including Covid cover): £28
- Entrance fee to Cragside House & Gardens (free to National Trust Members)
- Optional boat trip on Day 4
- Gratuities
- Lunches

Price based on 16th March. Minimum numbers required. Home/working conditions apply.



Chelmsford u3a presents

The Historic Houses & Heritage of Northumbria

5 days from £669 Departing 8th May 2024

WHAT WE WILL SEE

- Durham
- The Angel of the North
- Beamish Open Air Museum
- Alnwick Gardens
- Cragside House & Gardens
- Lindisfarne Priory
- Seahouses
- Yorkshire Sculpture Park



Day 1

We depart by executive coach from our designated pick up points and en route to our hotel we spend some time at leisure in Durham. We then continue to the 3* Glaisdale Hotel at Whickham for a four night stay on a half board basis.

Day 2

This morning we visit Antony Gormley's The Angel of the North. Since spreading its wings in February 1998, the Angel of the North has become one of the most talked about and recognisable pieces of public art ever produced, winning many accolades and awards along the way. We continue to the Beamish Open Air Museum. Set in over 300 acres of beautiful countryside, the museum vividly recreates life in the north of England in the early 1800s and 1900s.

Day 3

Our Blue Badge guide accompanies us on our visit to Alnwick Gardens. It was the Duchess of Northumberland's vision to create a beautiful public space accessible to everyone, and the garden is now a halfway to completion featuring spectacular water displays, wonderful gardens and one of the largest tree houses in the world. We continue to the National Trust's Cragside House and Gardens, a wonderful Victorian mansion dating from the 18th century and described as 'the palace of a modern magician'. Its interior features state of the art hydraulics powering a revolutionary lift system and internal telephones which mesmerised visitors in its time.

Day 4

We visit the remains of the English Heritage's Lindisfarne Priory on Holy Island with our Blue Badge guide this morning. The ancient monks built the priory nearly 1,400 years ago and this is the site where St Aidan and St Cuthbert founded the great powerhouse of Christianity in Anglo Saxon Northumbria, and where the famous Lindisfarne Gospels were created in the early 700s. The Priory's museum focuses on a grisly Viking raid, the cult of St Cuthbert, and the beautiful medieval manuscript, the Lindisfarne Gospels. We spend some time at leisure in Seahouses this afternoon, or alternatively you may choose to join our optional boat trip to the Farne Islands, one of Britain's most important bird sanctuaries.

Day 5

After checking out of our hotel and en route home we visit the Yorkshire Sculpture Park near Wakefield, home to a changing display of large contemporary sculptures by British and international artists. Taking carefully selected comfort stops en route, we return back to our original pick up points.

NB: Please note we reserve the right to alter the above itinerary if required for operational reasons. Given the historic nature of the sites visited a certain degree of walking will be involved, and this tour may not be suitable for those with mobility problems.

Booking Form

Chelmsford u3a presents
The Historic Houses & Heritage of Northumbria
Departing 8th May 2024

Title	First Name	Surname	Date of Birth	Tour/Double	Wishes to share his name	Priority of Referral	Year of Referral
				Single Person	YES/NO	1st/2nd/3rd	YES/NO
				Double	YES/NO	1st/2nd/3rd	YES/NO
				Double	YES/NO	1st/2nd/3rd	YES/NO

For Credit Card Debit Card Payments

Card no: Expiry: Security No:

Card: Debit:

Address of First Named Passenger Above

Address:

Postcode:

Mobile/Text/Email:

Telephone:

Email:

Payment Details

1. Price: Non Refundable Deposit of £100.00 per person = £

2. Invoice: Full amount of £669.00 per person = £

3. Invoice: Single room supplement of £90.00 per person = £

4. Invoice: Insurance including 20% insurance premium tax of £108.00 per person = £

5. Invoice: All deposit cheques to be made payable to Tailored Travel & returned with completed booking form to 18 Roughtons, Chelmsford CM2 8TF. £

Name

Individual/Corporate/Institution:

Telephone Number:

Alternative Contact Name:

Telephone Number:

Telephone Number:

Client Declaration

I warrant that I am authorised to make the booking and that I have read, understood and agreed for myself and all others named above the Booking Conditions, and other information set out in any brochures, leaflets or emails, to my holiday. I am 18 years old or over (if under 18 years of age, this Booking Form may be signed by your Parent/Guardian etc.)

Signed: Date:

FINANCIAL SECURITY

All Tailored Travel bookings are protected under ATOL 2182. If you are unable to pay for your holiday, we will refund you the full amount of your booking.

Tailored Travel Ltd

18 Roughtons Road, info@tailored-travel.co.uk
Chelmsford Essex CM2 8TF
Tel: 0202 7084 4970

Killarney & The Ring of Kerry

We stay amidst the stunning scenery of Ireland's south west; the picturesque resort of Killarney provides the ideal location for a peaceful and relaxing holiday. This pretty town has retained its traditions throughout the years, still boasting the jaunting car, many old pubs, colourful shops and quaint side streets. The Ring of Kerry and Dingle Peninsula are wild, isolated and stunningly beautiful; giving us scenic Ireland at its very best.

Your Holiday Hotel
4* Gleneagle Hotel, Killarney
Tel: 00 353 646671550

Bright and traditionally furnished each room includes free WiFi and satellite TV. There is a private bathroom with a hairdryer, along with tea and coffee facilities. Some rooms offer views of Killarney National Park

The 3* Beaufort Park Hotel, Mold outward
The 3* Talbot Hotel, Wexford on the return.

Your Holiday Itinerary

Day 1 We leave Chelmsford from your local pick-up point and travel to Wales with suitable stops for refreshments on the way and arrive at the Beaufort Park Hotel, Mold for our overnight dinner and room only.

Day 2 We make an early start to Holyhead for the Ferry to Dublin.(breakfast on ferry) We then make our way across Ireland to Killarney and the Gleneagles Hotel for the next four nights. (Live musical entertainment each night)

Day 3 Full day at leisure in Killarney. The most popular way to learn about the town and its lakes is to take a jaunting car ride. The tour runs through the Killarney National Park and along the edge of Lough Leane to Ross Castle. From here catch the "Lilly of Killarney" to cruise the lake, a memorable way to view the surrounding mountains. Alternatively visit the magnificent Muckross House, gardens and traditional farm. The Victorian Mansion is elegantly furnished fully befitting one of its most famous guests, Queen Victoria. Back in town leave plenty of time for shopping since many of the shops stay open till late.(jaunting Carts & boat cruise optional)

Day 4 Today is a full day tour of the fabulous Ring of Kerry, which takes in a hundred miles of some of Ireland's most spectacular coastal scenery. First we travel through Killorglin, perched high above the banks of the river Laune, via Glenbeigh and onto the fishing ports of Cahirciveen and Waterville. On return to the hotel we pass through Molls Gap, a fascinating mixture of majestic mountains and rugged Atlantic coastline.

Day 5 A full day on the Dingle. Enjoy a scenic tour of this precious Irish landscape with ancient beehive huts surrounded by an intricate coastline whose western tip is the most westerly point in the whole of Ireland, a region that has captivated poets, writers and filmmakers for generations. We stop in the town of Dingle for a while. Return to our hotel for evening meal. (Optional Boat trip Dingle Bay arrange with driver)

Day 6 This morning we leave Killarney and pass through the lovely valley of the River Blackwater via Fermoy and Waterford to Wexford with stops en route. Our hotel tonight is the Talbot Hotel Wexford, dinner and breakfast at the hotel.

Day 7 We board the Irish ferry at Rosslare, which sails to Pembroke crossing time approx 3½ hours. On arrival we begin our homeward journey via the motorway network, with suitable stops en-route arriving back in Chelmsford early evening.

7 DAY TOUR

Departure Date

6th - 12th October

Price Per Person £899.00

single supplement £220.75

Your holiday includes:

6 nights*, dinner, bed & breakfast

Return ferry crossings

Excursions as described

Porterage in main hotel

Executive coach travel

Currency Euro

Identification required